

# Amber Hughes

Botanist  
Grand Staircase-Escalante  
National Monument

Escalante River Watershed  
Partnership

[ahughes@blm.gov](mailto:ahughes@blm.gov)

(435) 826-5602

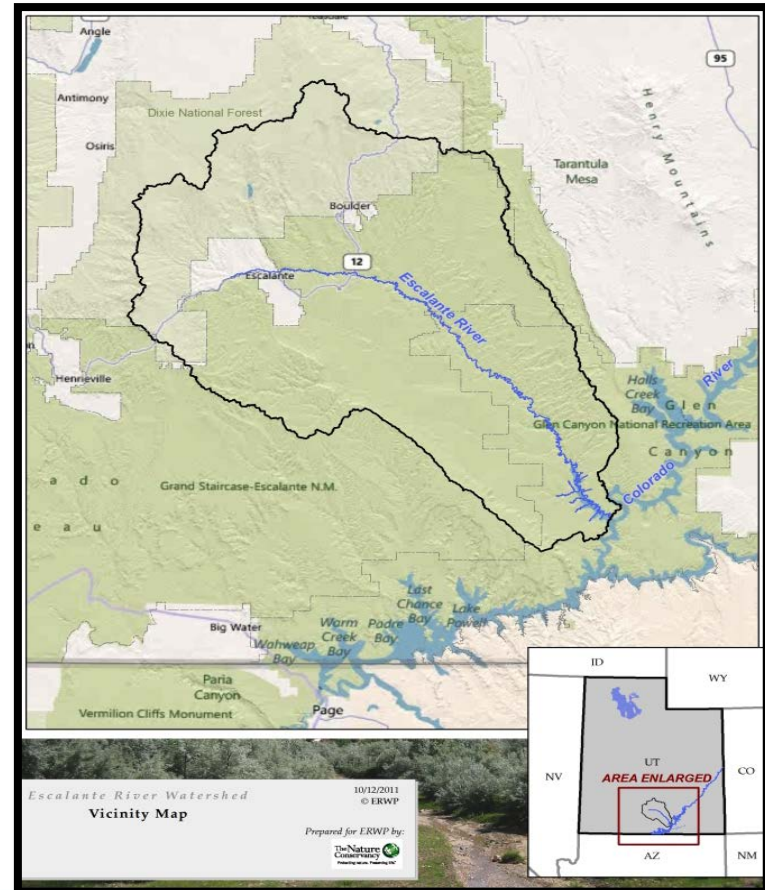
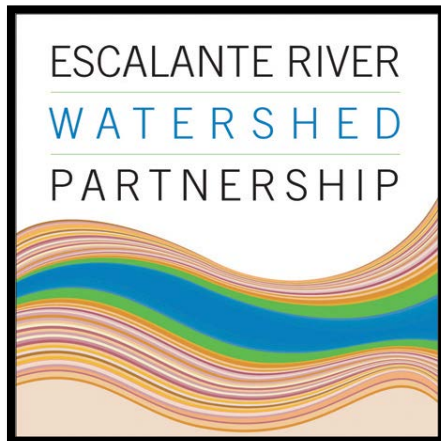


## Take It Outside!



# Escalante River Watershed Partnership

- Riparian restoration along the Escalante begins in Glen Canyon (Lake Powell) in 2000.
- Restoration begins along the Escalante in Grand Staircase 2006 .
- Escalante River Watershed Partnership forms 2009.



Take It Outside!



## Prior to the ERWP formation

Glen Canyon started Russian olive removal efforts...At the bottom of the watershed



Grand Staircase started removal efforts in the middle of the watershed.

On private lands, little to no removal was occurring.

### What's the Problem?

Continuous supply of Russian olive seeds flowing into treated areas on public lands.



# Take It Outside!



# In the Beginning....



It starts with a few people and a common goal.

Find a neutral facilitator.

Informal meetings to find those who share your goals.

Begin the process of drawing up an agreement.

## Take It Outside!



## Facilitator Benefits

- Ground rules are established.
- Keeps large group of people focused on the agenda.
- Circular, rabbit hole, and side conversations are kept at bay.
- Meeting notes and assignments are sent out sometimes repeatedly.
- Assists with making effective agendas.
- Built in mediator to settle disagreements.

### Ground Rules

#### Respect Each Other

Listening is important  
One person speaks at a time  
No interrupting

#### Respect the Group

Every idea is worthy  
Make your points succinctly  
Everyone has an equal right to talk

#### It's OK to Disagree – Agreeably

Challenge ideas, not people  
No “zingers” or cheap shots  
Disagreement is an opportunity to learn

#### Keep the Conversation Constructive

Explain your reasoning  
Keep an open mind  
Avoid passing judgment

# Take It Outside!



# Categories of Stakeholders

## Must include:

- Decision-makers
- Anyone who will be implementing decision
- Anyone who has power to block decision or its implementation

## Include in some way:

- Anyone affected by decision
- Anyone with relevant information
- Anyone with persuasive clout in affected population(s)
- Anyone interested in decision



# Take It Outside!



# Partnering Agreement

- Initial partners
- Background information
- Purpose of Partnership
- Roles & responsibilities
- What each entity will provide
- NO FUND OBLIGATING!!!
- Signatures

## PARTNERSHIP AGREEMENT

for the Establishment and Operation of the Escalante River Watershed Partnership (ERWP) to develop a collaborative and comprehensive approach to restore, protect and maintain a healthy riparian ecosystem in the Escalante River watershed in Garfield and Kane Counties, Utah

[NOTE: The list of partners will be changed to reflect signatories only]

This Partnership Agreement is made and entered into by and between the following parties:

Garfield County, City of Escalante, Town of Boulder, Garfield County Conservation District, Grand Canyon Trust (GCT); The Nature Conservancy (TNC, a District of Columbia non-profit corporation), Bureau of Land Management (BLM); National Park Service (NPS), U.S. Forest Service (USFS), Natural Resources Conservation Service (NRCS), Utah Division of Wildlife Resources (UDWR), Utah Division of Forestry Fire and State Lands (UDFFSL), USU ext., and Resource Conservation and Development Council, Inc., Grand Staircase Escalante Partners, BCA, SITLA, consultants and private property owners.

### Article I. Purpose of Partnership Agreement

The purpose of this Partnership Agreement is to create principles of cooperation and coordination between the signatories so that they may establish and operate within the ERWP, resulting in more efficient and effective riparian restoration projects. ERWP will define finite objectives and specific actions through an Annual Plan of Work. A more specific description of operating norms can be found in the attached Charter.

### Article II. Background

The Escalante River is one of the last free-flowing small rivers in the American Southwest. In addition, it is one of the premier backcountry destinations in the west for hikers. Though largely undeveloped, the river remains vulnerable to future water developments as human population increases in the surrounding communities. Currently, the greatest threat to the river and its associated riparian communities is the invasion and spread of noxious exotic plants, principally Russian olive (*Elaeagnus angustifolia*) and tamarisk (*Tamarix ramosissima*). Tamarisk, Russian olive and other nonnative woody species significantly impact the riparian areas along the Escalante River and its tributaries in Garfield County, Utah. These infestations harm wildlife habitat, recreational use, and water resources, while increasing wildfire hazards. Although native trees in wet riparian areas can use more or less the same amount of water, they do not grow as densely as tamarisk and Russian olive. Further, these nonnative trees have spread beyond the riparian floodplain into zones typically dominated by semi-arid lands vegetation.

Despite extensive control efforts over the last 10 years by the NPS and BLM, Russian olive is still an abundant species in portions of the watershed, and continues to re-invade previously cleared areas. To eradicate these species, a larger coordinated effort among the various land management agencies, private landowners and other interested groups is required.

# Take It Outside!



# When and Where to Meet, and How Often?

Meet in a public place that all are welcome to join.

The meeting space needs access to items such as a projector & screen and basic facilities.

Annually

Bi-annually

Quarterly

One day meeting or mini workshop.



Provide coffee/tea & snacks!

# Take It Outside!





# Keep Your Meetings Fresh!

With each meeting incorporate activities to keep people engaged.

Get to know your watershed!

- Project/Field site visits
  - Guest speaker
  - Youth Corps. meet & greet
  - Hands on project
- Evening lectures
  - Historic photo presentation
    - These are great to invite local community members to.
- Guest speakers during the meeting



## Take It Outside!



# Partnership Organization

## Informal Partnership

- Coordinating Committee
  - Conservation Targets
  - Education & Outreach
  - Science
  - Woody Invasive/Restoration

## Formal Partnership 501(c)(3) status

- Board with President/Vice President
  - Coordinating Committee
    - Conservation Targets
    - Education & Outreach
    - Science
    - Woody Invasive/Restoration

### Escalante River Watershed Partnership (ERWP)

#### Role of Committees

- Implement Ten-Year Action Plan
- Develop and implement annual committee work plan (based on priorities in Ten-Year Action Plan)
  - Annual work plan to be presented to ERWP at first meeting of the year
- Provide summary of year's activities to Linda Whitham or facilitator
  - Due by 12/31
- Identify potential funding as needed for committee's work
  - Ongoing
- Committee's annual work plan and next 12-month budget to Coordinating Committee
  - Due by 12/31
- Keep Coordinating Committee apprised of funding status and needs
  - At least quarterly

#### Responsibility of Committee Chair

- Schedule regular committee meetings (conference call or face-to-face)
  - Circulate meeting summary to committee members, Linda Whitham and facilitator
- Delegate work to be done to committee members (and follow-up as necessary)
- Provide committee updates at quarterly ERWP meetings (or delegate)

#### Responsibility of Committee Membership

- Participate in regular committee meetings
- Do your fair share of the committee's work – planning and implementation
- Share information with committee from your "day job" that is relevant to ERWP – i.e., be collaborative

Signing up as a committee member implies you will be an **active** member

Information about committees' work is available via quarterly committee updates at ERWP meetings

---

### 2014 Committee Sign-up

Your name and affiliation:

Contact info:

Committee selection:

- Conservation Targets
- Education/Outreach
- Science
- Woody Invasives

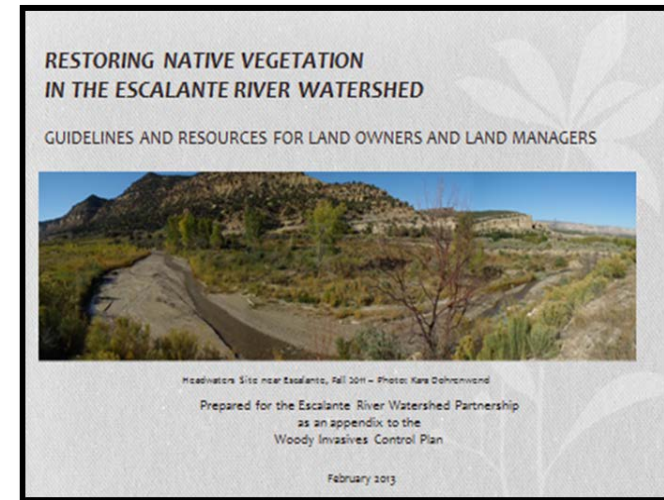
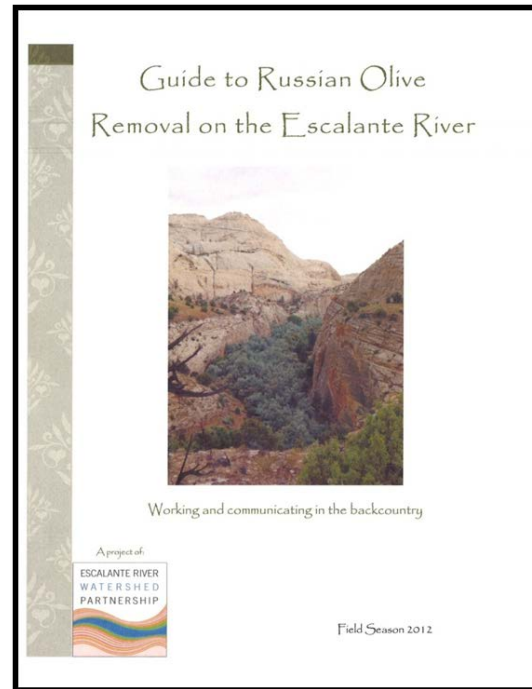
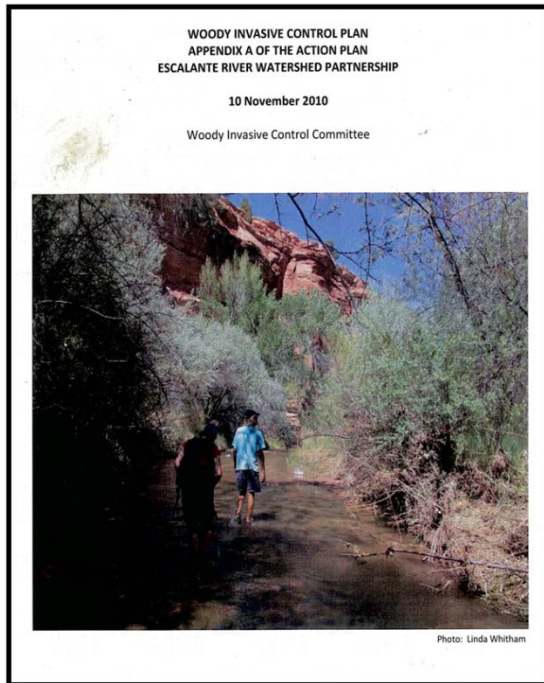
How would you like to contribute in 2014 to the committee you selected? Be specific.

# Take It Outside!



# Develop your Plans

- Develop the Mission and Vision Statement
- 10 year Conservation Action Plan
- 5 year Plans



Business Plan?

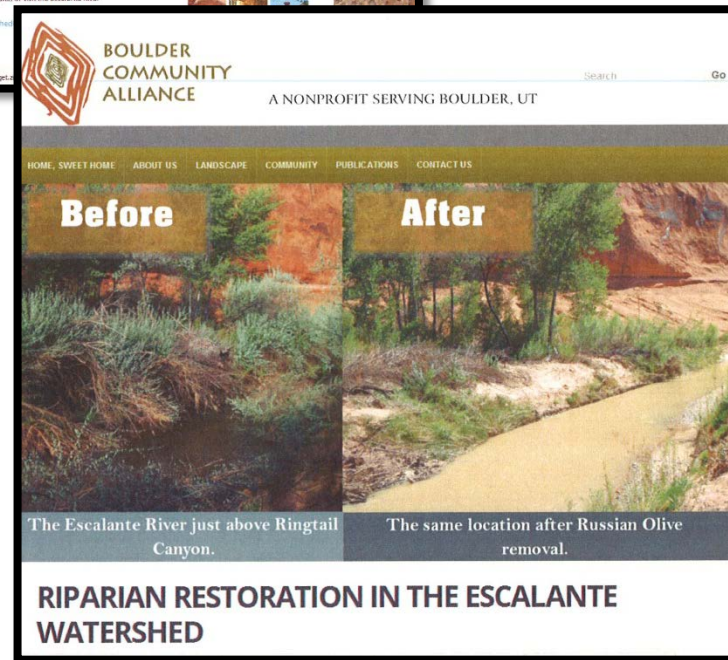
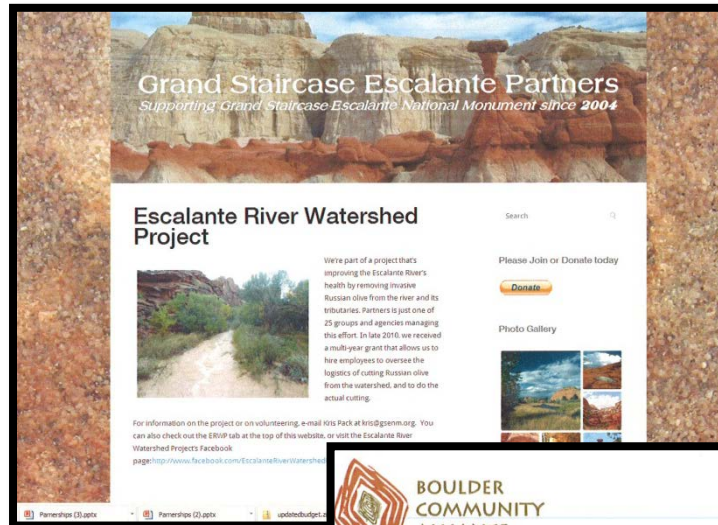
# Take It Outside!



# Funding your projects

## Benefits of working with a 501(c)(3)

- Non-federal funding can be managed by a friends group.
- Federal funds can be managed by a friends group.
- Friends group can leverage both federal and non-federal dollars for match.
- Project work can be contracted through the partnering 501(c)(3).
- Reports are done by the 501(c)(3).
- Employees can be hired
- The list goes on!



# Take It Outside!

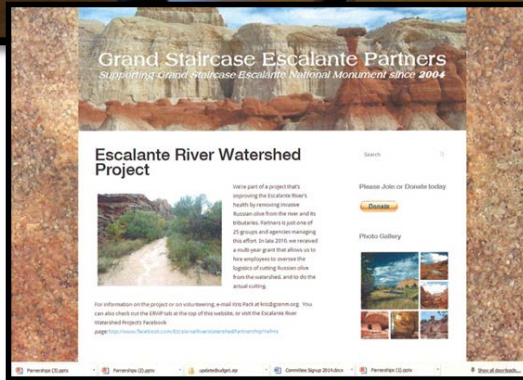


# Where the Rubber Meets the Road



- Woody Invasive/Restoration committee and the partnering friends group work together to:

- Identify & map project areas
- Determine the number of youth needed
- Develop a budget
- Look & apply for grant opportunities
  - Utah Partners for Conservation & Development
  - Walton Family Foundation
  - National Fish & Wildlife Foundation
    - » America's Great Outdoors
    - » Pulling Together
    - » 5 Star Grant
  - Utah Department of Agriculture



Take It Outside!



# Youth Take it Outside!



- If received, funding goes into contracts.
  - Youth Interns are hired.
  - Youth corps crews are hired.
  - Volunteer projects scheduled.



Take It Outside!

# Summary

- Partnerships take time to create.
- Welcome all who come to your partnership meetings.
- Develop a Partnership Agreement.
- Create your work plans and realize they are living documents that will need annual updates
- Collaborate with a group of people who are willing to contribute to the process of grant writing
- Provide food at all your events!!!



## Take It Outside!

